



Roll Interchange Catalog

Table of Contents

- 2 CEMA B - Troughing Idlers & Returns
- 4 CEMA C - Troughing Idlers & Returns
- 6 CEMA D - Troughing Idlers & Returns
- 8 CEMA E - Troughing Idlers & Returns
- 9 Dimension Requirements

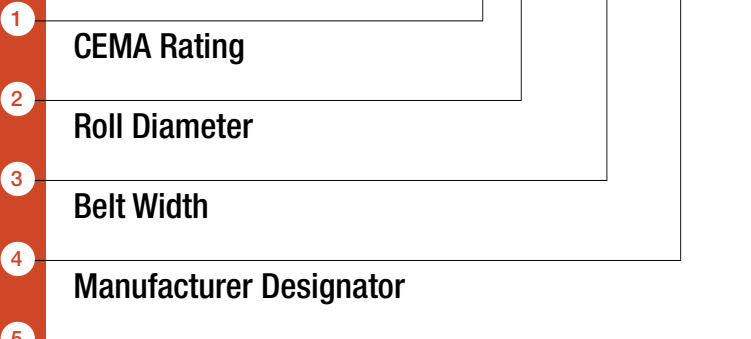
Notes:

Superior makes ordering easy with a simple number and letter system so you can easily jot down the idlers you need and relay then to our sales staff. This will eliminate confusion and ensure accuracy on your order. Simply follow the procedure below and you'll be on your way to placing an accurate order.

Superior manufactures many different styles of CEMA B, C, D, and E idlers along with a full line of CB-504 style bearing idlers and rollers. We have been in the idler manufacturing business since 1974 and have modified our product offering to provide solutions for our customers. We appreciate feedback from the field on ways to improve our products and have made many changes based on this valued customer feedback.

Part Numbering

C6-360100



- 01: Precision
- 02: Continental
- 03: Stephens Adamson
- 04: DBT
- 05: FMC (slot)
- 06: Hewitt-Robins (slot)
- 07: Luff
- 08: Assink
- 09: Strongco
- 10: Douglas (slot)
- 11: FMC 3000 (nut)
- 12: Douglas (nut)
- 13: Rexnord (nut)
- 14: Hewitt-Robins (nut)
- 15: Continental (nut)
- 16: Goodman (nut)

Roll Type Designator

1. **CEMA Rating or Series**- Specify either CEMA B, C, D, or E.
2. **Roll Size** - Specify either 4, 5, 6 or 7 for the corresponding roll size diameter.
3. **Belt Width** - Specify either 18, 24, 30, 36, 42, 48, 54, 60, 72, 84, or 96 depending on or CEMA rating.
4. **Manufacturer** - Specify the idler manufacturer that you are attempting to fit.
5. **Roll Type** - Specify the type of roll you are attempting to fit, steel trough (00), steel return (01), troughing impact (03), or return impact (11).

CEMA B Idlers | TROUGHING IDLERS

To get the Superior part number for a replacement roll - select manufacturer and belt width by roll diameter

Roll Diameter = 4"	18	24	30	36	42	48
Continental	B4-180200	B4-240200	B4-300200	B4-360200	B4-420200	B4-480200
DBT	B4-180400	B4-240400	B4-300400	B4-360400	B4-420400	B4-480400
Douglas	B4-181000	B4-241000	B4-301000	B4-361000	B4-421000	B4-481000
FMC	B4-180500	B4-240500	B4-300500	B4-360500	B4-420500	B4-480500
Goodman (nut)	B4-181600	B4-241600	B4-301600	B4-361600	B4-421600	B4-481600
Hewitt-Robins	B4-180600	B4-240600	B4-300600	B4-360600	B4-420600	B4-480600
Luff	B4-180700	B4-240700	B4-300700	B4-360700	B4-420700	B4-480700
Precision	B4-180100	B4-240100	B4-300100	B4-360100	B4-420100	B4-480100
Rexnord (nut)	B4-181300	B4-241300	B4-301300	B4-361300	B4-421300	B4-481300
Stephens-Adamson	B4-180300	B4-240300	B4-300300	B4-360300	B4-420300	B4-480300
Strongco	B4-180900	B4-240900	B4-300900	B4-360900	B4-420900	B4-480900

Roll Diameter = 5"	18	24	30	36	42	48
Continental	B5-180200	B5-240200	B5-300200	B5-360200	B5-420200	B5-480200
DBT	B5-180400	B5-240400	B5-300400	B5-360400	B5-420400	B5-480400
Douglas	B5-181000	B5-241000	B5-301000	B5-361000	B5-421000	B5-481000
FMC	B5-180500	B5-240500	B5-300500	B5-360500	B5-420500	B5-480500
Goodman (nut)	B5-181600	B5-241600	B5-301600	B5-361600	B5-421600	B5-481600
Hewitt-Robins	B5-180600	B5-240600	B5-300600	B5-360600	B5-420600	B5-480600
Luff	B5-180700	B5-240700	B5-300700	B5-360700	B5-420700	B5-480700
Precision	B5-180100	B5-240100	B5-300100	B5-360100	B5-420100	B5-480100
Rexnord (nut)	B5-181300	B5-241300	B5-301300	B5-361300	B5-421300	B5-481300
Stephens-Adamson	B5-180300	B5-240300	B5-300300	B5-360300	B5-420300	B5-480300
Strongco	B5-180900	B5-240900	B5-300900	B5-360900	B5-420900	B5-480900

To get the Superior part number for a replacement roll - select manufacturer and belt width by roll diameter

Roll Diameter = 4"	18	24	30	36	42	48
Continental	B4-180201	B4-240201	B4-300201	B4-360201	B4-420201	B4-480201
DBT	B4-180401	B4-240401	B4-300401	B4-360401	B4-420401	B4-480401
Douglas	B4-181001	B4-241001	B4-301001	B4-361001	B4-421001	B4-481001
FMC	B4-180501	B4-240501	B4-300501	B4-360501	B4-420501	B4-480501
Goodman (nut)	B4-181601	B4-241601	B4-301601	B4-361601	B4-421601	B4-481601
Hewitt-Robins	B4-180601	B4-240601	B4-300601	B4-360601	B4-420601	B4-480601
Luff	B4-180701	B4-240701	B4-300701	B4-360701	B4-420701	B4-480701
Precision	B4-180101	B4-240101	B4-300101	B4-360101	B4-420101	B4-480101
Rexnord (nut)	B4-181301	B4-241301	B4-301301	B4-361301	B4-421301	B4-481301
Stephens-Adamson	B4-180301	B4-240301	B4-300301	B4-360301	B4-420301	B4-480301
Strongco	B4-180901	B4-240901	B4-300901	B4-360901	B4-420901	B4-480901

Roll Diameter = 5"	18	24	30	36	42	48
Continental	B5-180101	B5-240101	B5-300101	B5-360101	B5-420101	B5-480101
DBT	B5-180401	B5-240401	B5-300401	B5-360401	B5-420401	B5-480401
Douglas	B5-181001	B5-241001	B5-301001	B5-361001	B5-421001	B5-481001
FMC	B5-180501	B5-240501	B5-300501	B5-360501	B5-420501	B5-480501
Goodman (nut)	B5-181601	B5-241601	B5-301601	B5-361601	B5-421601	B5-481601
Hewitt-Robins	B5-180601	B5-240601	B5-300601	B5-360601	B5-420601	B5-480601
Luff	B5-180701	B5-240701	B5-300701	B5-360701	B5-420701	B5-480701
Precision	B5-180101	B5-240101	B5-300101	B5-360101	B5-420101	B5-480101
Rexnord (nut)	B5-181301	B5-241301	B5-301301	B5-361301	B5-421301	B5-481301
Stephens-Adamson	B5-180301	B5-240301	B5-300301	B5-360301	B5-420301	B5-480301
Strongco	B5-180901	B5-240901	B5-300901	B5-360901	B5-420901	B5-480901

CEMA C Idlers | TROUGHING IDLERS

To get the Superior part number for a replacement roll - select manufacturer and belt width by roll diameter

Roll Diameter = 4"	18	24	30	36	42	48	54	60
Assink	C4-180800	C4-240800	C4-300800	C4-360800	C4-420800	C4-480800	C4-540800	C4-600800
Continental HC Series	C4-180200	C4-240200	C4-300200	C4-360200	C4-420200	C4-480200	C4-540200	C4-600200
DBT	C4-180400	C4-240400	C4-300400	C4-360400	C4-420400	C4-480400	C4-540400	C4-600400
Douglas (nut)	C4-181200	C4-241200	C4-301200	C4-361200	C4-421200	C4-481200	C4-541200	C4-601200
FMC 2000	C4-180500	C4-240500	C4-300500	C4-360500	C4-420500	C4-480500	C4-540500	C4-600500
FMC 3000	C4-181100	C4-241100	C4-301100	C4-361100	C4-421100	C4-481100	C4-541100	C4-601100
Goodman (nut)	C4-181600	C4-241600	C4-301600	C4-361600	C4-421600	C4-481600	C4-541600	C4-601600
Hewitt-Robins	C4-180600	C4-240600	C4-300600	C4-360600	C4-420600	C4-480600	C4-540600	C4-600600
Luff	C4-180700	C4-240700	C4-300700	C4-360700	C4-420700	C4-480700	C4-540700	C4-600700
Precision	C4-180100	C4-240100	C4-300100	C4-360100	C4-420100	C4-480100	C4-540100	C4-600100
Rexnord (nut)	C4-181300	C4-241300	C4-301300	C4-361300	C4-421300	C4-481300	C4-541300	C4-601300
Stephens-Adamson	C4-180300	C4-240300	C4-300300	C4-360300	C4-420300	C4-480300	C4-540300	C4-600300
Strongco	C4-180900	C4-240900	C4-300900	C4-360900	C4-420900	C4-480900	C4-540900	C4-600900
Douglas (slot)	C4-181000	C4-241000	C4-301000	C4-361000	C4-421000	C4-481000	C4-541000	C4-601000

Roll Diameter = 5"	18	24	30	36	42	48	54	60
Assink	C5-180800	C5-240800	C5-300800	C5-360800	C5-420800	C5-480800	C5-540800	C5-600800
Continental HC Series	C5-180200	C5-240200	C5-300200	C5-360200	C5-420200	C5-480200	C5-540200	C5-600200
DBT	C5-180400	C5-240400	C5-300400	C5-360400	C5-420400	C5-480400	C5-540400	C5-600400
Douglas (nut)	C5-181200	C5-241200	C5-301200	C5-361200	C5-421200	C5-481200	C5-541200	C5-601200
FMC 2000	C5-180500	C5-240500	C5-300500	C5-360500	C5-420500	C5-480500	C5-540500	C5-600500
FMC 3000	C5-181100	C5-241100	C5-301100	C5-361100	C5-421100	C5-481100	C5-541100	C5-601100
Goodman (nut)	C5-181600	C5-241600	C5-301600	C5-361600	C5-421600	C5-481600	C5-541600	C5-601600
Hewitt-Robins	C5-180600	C5-240600	C5-300600	C5-360600	C5-420600	C5-480600	C5-540600	C5-600600
Luff	C5-180700	C5-240700	C5-300700	C5-360700	C5-420700	C5-480700	C5-540700	C5-600700
Precision	C5-180100	C5-240100	C5-300100	C5-360100	C5-420100	C5-480100	C5-540100	C5-600100
Rexnord (nut)	C5-181300	C5-241300	C5-301300	C5-361300	C5-421300	C5-481300	C5-541300	C5-601300
Stephens-Adamson	C5-180300	C5-240300	C5-300300	C5-360300	C5-420300	C5-480300	C5-540300	C5-600300
Strongco	C5-180900	C5-240900	C5-300900	C5-360900	C5-420900	C5-480900	C5-540900	C5-600900
Douglas (slot)	C5-181000	C5-241000	C5-301000	C5-361000	C5-421000	C5-481000	C5-541000	C5-601000

Roll Diameter = 6"	18	24	30	36	42	48	54	60
Assink	C6-180800	C6-240800	C6-300800	C6-360800	C6-420800	C6-480800	C6-540800	C6-600800
Continental HC Series	C6-180200	C6-240200	C6-300200	C6-360200	C6-420200	C6-480200	C6-540200	C6-600200
DBT	C6-180400	C6-240400	C6-300400	C6-360400	C6-420400	C6-480400	C6-540400	C6-600400
Douglas (nut)	C6-181200	C6-241200	C6-301200	C6-361200	C6-421200	C6-481200	C6-541200	C6-601200
FMC 2000	C6-180500	C6-240500	C6-300500	C6-360500	C6-420500	C6-480500	C6-540500	C6-600500
FMC 3000	C6-181100	C6-241100	C6-301100	C6-361100	C6-421100	C6-481100	C6-541100	C6-601100
Goodman (nut)	C6-181600	C6-241600	C6-301600	C6-361600	C6-421600	C6-481600	C6-541600	C6-601600
Hewitt-Robins	C6-180600	C6-240600	C6-300600	C6-360600	C6-420600	C6-480600	C6-540600	C6-600600
Luff	C6-180700	C6-240700	C6-300700	C6-360700	C6-420700	C6-480700	C6-540700	C6-600700
Precision	C6-180100	C6-240100	C6-300100	C6-360100	C6-420100	C6-480100	C6-540100	C6-600100
Rexnord (nut)	C6-181300	C6-241300	C6-301300	C6-361300	C6-421300	C6-481300	C6-541300	C6-601300
Stephens-Adamson	C6-180300	C6-240300	C6-300300	C6-360300	C6-420300	C6-480300	C6-540300	C6-600300
Strongco	C6-180900	C6-240900	C6-300900	C6-360900	C6-420900	C6-480900	C6-540900	C6-600900
Douglas (slot)	C6-181000	C6-241000	C6-301000	C6-361000	C6-421000	C6-481000	C6-541000	C6-601000

To get the Superior part number for a replacement roll - select manufacturer and belt width by roll diameter

Roll Diameter = 4"	18	24	30	36	42	48	54	60
Assink	C4-180801	C4-240801	C4-300801	C4-360801	C4-420801	C4-480801	C4-540801	C4-600801
Continental HC Series	C4-180201	C4-240201	C4-300201	C4-360201	C4-420201	C4-480201	C4-540201	C4-600201
DBT	C4-180401	C4-240401	C4-300401	C4-360401	C4-420401	C4-480401	C4-540401	C4-600401
Douglas (nut)	C4-181201	C4-241201	C4-301201	C4-361201	C4-421201	C4-481201	C4-541201	C4-601201
FMC 2000	C4-180501	C4-240501	C4-300501	C4-360501	C4-420501	C4-480501	C4-540501	C4-600501
FMC 3000	C4-181101	C4-241101	C4-301101	C4-361101	C4-421101	C4-481101	C4-541101	C4-601101
Goodman (nut)	C4-181601	C4-241601	C4-301601	C4-361601	C4-421601	C4-481601	C4-541601	C4-601601
Hewitt-Robins	C4-180601	C4-240601	C4-300601	C4-360601	C4-420601	C4-480601	C4-540601	C4-600601
Luff	C4-180701	C4-240701	C4-300701	C4-360701	C4-420701	C4-480701	C4-540701	C4-600701
Precision	C4-180101	C4-240101	C4-300101	C4-360101	C4-420101	C4-480101	C4-540101	C4-600101
Rexnord (nut)	C4-181301	C4-241301	C4-301301	C4-361301	C4-421301	C4-481301	C4-541301	C4-601301
Stephens-Adamson	C4-180301	C4-240301	C4-300301	C4-360301	C4-420301	C4-480301	C4-540301	C4-600301
Strongco	C4-180901	C4-240901	C4-300901	C4-360901	C4-420901	C4-480901	C4-540901	C4-600901
Douglas (slot)	C4-181001	C4-241001	C4-301001	C4-361001	C4-421001	C4-481001	C4-541001	C4-601001

Roll Diameter = 5"	18	24	30	36	42	48	54	60
Assink	C5-180801	C5-240801	C5-300801	C5-360801	C5-420801	C5-480801	C5-540801	C5-600801
Continental HC Series	C5-180201	C5-240201	C5-300201	C5-360201	C5-420201	C5-480201	C5-540201	C5-600201
DBT	C5-180401	C5-240401	C5-300401	C5-360401	C5-420401	C5-480401	C5-540401	C5-600401
Douglas (nut)	C5-181201	C5-241201	C5-301201	C5-361201	C5-421201	C5-481201	C5-541201	C5-601201
FMC 2000	C5-180501	C5-240501	C5-300501	C5-360501	C5-420501	C5-480501	C5-540501	C5-600501
FMC 3000	C5-181101	C5-241101	C5-301101	C5-361101	C5-421101	C5-481101	C5-541101	C5-601101
Goodman (nut)	C5-181601	C5-241601	C5-301601	C5-361601	C5-421601	C5-481601	C5-541601	C5-601601
Hewitt-Robins	C5-180601	C5-240601	C5-300601	C5-360601	C5-420601	C5-480601	C5-540601	C5-600601
Luff	C5-180701	C5-240701	C5-300701	C5-360701	C5-420701	C5-480701	C5-540701	C5-600701
Precision	C5-180101	C5-240101	C5-300101	C5-360101	C5-420101	C5-480101	C5-540101	C5-600101
Rexnord (nut)	C5-181301	C5-241301	C5-301301	C5-361301	C5-421301	C5-481301	C5-541301	C5-601301
Stephens-Adamson	C5-180301	C5-240301	C5-300301	C5-360301	C5-420301	C5-480301	C5-540301	C5-600301
Strongco	C5-180901	C5-240901	C5-300901	C5-360901	C5-420901	C5-480901	C5-540901	C5-600901
Douglas (slot)	C5-181001	C5-241001	C5-301001	C5-361001	C5-421001	C5-481001	C5-541001	C5-601001

Roll Diameter = 6"	18	24	30	36	42	48	54	60
Assink	C6-180801	C6-240801	C6-300801	C6-360801	C6-420801	C6-480801	C6-540801	C6-600801
Continental HC Series	C6-180201	C6-240201	C6-300201	C6-360201	C6-420201	C6-480201	C6-540201	C6-600201
DBT	C6-180401	C6-240401	C6-300401	C6-360401	C6-420401	C6-480401	C6-540401	C6-600401
Douglas (nut)	C6-181201	C6-241201	C6-301201	C6-361201	C6-421201	C6-481201	C6-541201	C6-601201
FMC 2000	C6-180501	C6-240501	C6-300501	C6-360501	C6-420501	C6-480501	C6-540501	C6-600501
FMC 3000	C6-181101	C6-241101	C6-301101	C6-361101	C6-421101	C6-481101	C6-541101	C6-601101
Goodman (nut)	C6-181601	C6-241601	C6-301601	C6-361601	C6-421601	C6-481601	C6-541601	C6-601601
Hewitt-Robins	C6-180601	C6-240601	C6-300601	C6-360601	C6-420601	C6-480601	C6-540601	C6-600601
Luff	C6-180701	C6-240701	C6-300701	C6-360701	C6-420701	C6-480701	C6-540701	C6-600701
Precision	C6-180101	C6-240101	C6-300101	C6-360101	C6-420101	C6-480101	C6-540101	C6-600101
Rexnord (nut)	C6-181301	C6-241301	C6-301301	C6-361301	C6-421301	C6-481301	C6-541301	C6-601301
Stephens-Adamson	C6-180301	C6-240301	C6-300301	C6-360301	C6-420301	C6-480301	C6-540301	C6-600301
Strongco	C6-180901	C6-240901	C6-300901	C6-360901	C6-420901	C6-480901	C6-540901	C6-600901
Douglas (slot)	C6-181001	C6-241001	C6-301001	C6-361001	C6-421001	C6-481001	C6-541001	C6-601001

CEMA D Idlers | TROUGHING IDLERS

To get the Superior part number for a replacement roll - select manufacturer and belt width by roll diameter

Roll Diameter = 5"	24	30	36	42	48	54	60	72
Continental H-Plus (nut)	D5-241500	D5-301500	D5-361500	D5-421500	D5-481500	D5-541500	D5-601500	D5-721500
DBT	D5-240400	D5-300400	D5-360400	D5-420400	D5-480400	D5-540400	D5-600400	D5-720400
Douglas (slot)	D5-241000	D5-301000	D5-361000	D5-421000	D5-481000	D5-541000	D5-601000	D5-721000
FMC 3000 (nut)	D5-241100	D5-301100	D5-361100	D5-421100	D5-481100	D5-541100	D5-601100	D5-721100
Goodman (nut)	D5-241600	D5-301600	D5-361600	D5-421600	D5-481600	D5-541600	D5-601600	D5-721600
Hewitt-Robins (nut)	D5-241400	D5-301400	D5-361400	D5-421400	D5-481400	D5-541400	D5-601400	D5-721400
Luff	D5-240700	D5-300700	D5-360700	D5-420700	D5-480700	D5-540700	D5-600700	D5-720700
Precision	D5-240100	D5-300100	D5-360100	D5-420100	D5-480100	D5-540100	D5-600100	D5-720100
Rexnord (nut)	D5-241300	D5-301300	D5-361300	D5-421300	D5-481300	D5-541300	D5-601300	D5-721300
Stephens-Adamson	D5-240300	D5-300300	D5-360300	D5-420300	D5-480300	D5-540300	D5-600300	D5-720300
Strongco	D5-240900	D5-300900	D5-360900	D5-420900	D5-480900	D5-540900	D5-600900	D5-720900

Roll Diameter = 6"	24	30	36	42	48	54	60	72
Continental H-Plus (nut)	D6-241500	D6-301500	D6-361500	D6-421500	D6-481500	D6-541500	D6-601500	D6-721500
DBT	D6-240400	D6-300400	D6-360400	D6-420400	D6-480400	D6-540400	D6-600400	D6-720400
Douglas (slot)	D6-241000	D6-301000	D6-361000	D6-421000	D6-481000	D6-541000	D6-601000	D6-721000
FMC 3000 (nut)	D6-241100	D6-301100	D6-361100	D6-421100	D6-481100	D6-541100	D6-601100	D6-721100
Goodman (nut)	D6-241600	D6-301600	D6-361600	D6-421600	D6-481600	D6-541600	D6-601600	D6-721600
Hewitt-Robins (nut)	D6-241400	D6-301400	D6-361400	D6-421400	D6-481400	D6-541400	D6-601400	D6-721400
Luff	D6-240700	D6-300700	D6-360700	D6-420700	D6-480700	D6-540700	D6-600700	D6-720700
Precision	D6-240100	D6-300100	D6-360100	D6-420100	D6-480100	D6-540100	D6-600100	D6-720100
Rexnord (nut)	D6-241300	D6-301300	D6-361300	D6-421300	D6-481300	D6-541300	D6-601300	D6-721300
Stephens-Adamson	D6-240300	D6-300300	D6-360300	D6-420300	D6-480300	D6-540300	D6-600300	D6-720300
Strongco	D6-240900	D6-300900	D6-360900	D6-420900	D6-480900	D6-540900	D6-600900	D6-720900

To get the Superior part number for a replacement roll - select manufacturer and belt width by roll diameter

Roll Diameter = 5"	24	30	36	42	48	54	60	72
Continental H-Plus (nut)	D5-241501	D5-301501	D5-361501	D5-421501	D5-481501	D5-541501	D5-601501	D5-721501
DBT	D5-240401	D5-300401	D5-360401	D5-420401	D5-480401	D5-540401	D5-600401	D5-720401
Douglas (slot)	D5-241001	D5-301001	D5-361001	D5-421001	D5-481001	D5-541001	D5-601001	D5-721001
FMC 3000 (nut)	D5-241101	D5-301101	D5-361101	D5-421101	D5-481101	D5-541101	D5-601101	D5-721101
Goodman (nut)	D5-241601	D5-301601	D5-361601	D5-421601	D5-481601	D5-541601	D5-601601	D5-721601
Hewitt-Robins (nut)	D5-241401	D5-301401	D5-361401	D5-421401	D5-481401	D5-541401	D5-601401	D5-721401
Luff	D5-240701	D5-300701	D5-360701	D5-420701	D5-480701	D5-540701	D5-600701	D5-720701
Precision	D5-240101	D5-300101	D5-360101	D5-420101	D5-480101	D5-540101	D5-600101	D5-720101
Rexnord (nut)	D5-241301	D5-301301	D5-361301	D5-421301	D5-481301	D5-541301	D5-601301	D5-721301
Stephens-Adamson	D5-240301	D5-300301	D5-360301	D5-420301	D5-480301	D5-540301	D5-600301	D5-720301
Strongco	D5-240901	D5-300901	D5-360901	D5-420901	D5-480901	D5-540901	D5-600901	D5-720901

Roll Diameter = 6"	24	30	36	42	48	54	60	72
Continental H-Plus (nut)	D6-241501	D6-301501	D6-361501	D6-421501	D6-481501	D6-541501	D6-601501	D6-721501
DBT	D6-240401	D6-300401	D6-360401	D6-420401	D6-480401	D6-540401	D6-600401	D6-720401
Douglas (slot)	D6-241001	D6-301001	D6-361001	D6-421001	D6-481001	D6-541001	D6-601001	D6-721001
FMC 3000 (nut)	D6-241101	D6-301101	D6-361101	D6-421101	D6-481101	D6-541101	D6-601101	D6-721101
Goodman (nut)	D6-241601	D6-301601	D6-361601	D6-421601	D6-481601	D6-541601	D6-601601	D6-721601
Hewitt-Robins (nut)	D6-241401	D6-301401	D6-361401	D6-421401	D6-481401	D6-541401	D6-601401	D6-721401
Luff	D6-240701	D6-300701	D6-360701	D6-420701	D6-480701	D6-540701	D6-600701	D6-720701
Precision	D6-240101	D6-300101	D6-360101	D6-420101	D6-480101	D6-540101	D6-600101	D6-720101
Rexnord (nut)	D6-241301	D6-301301	D6-361301	D6-421301	D6-481301	D6-541301	D6-601301	D6-721301
Stephens-Adamson	D6-240301	D6-300301	D6-360301	D6-420301	D6-480301	D6-540301	D6-600301	D6-720301
Strongco	D6-240901	D6-300901	D6-360901	D6-420901	D6-480901	D6-540901	D6-600901	D6-720901

To get the Superior part number for a replacement roll - select manufacturer and belt width by roll diameter

Troughing Idlers

Roll Diameter = 6"	36	42	48	54	60	72	84	96
Continental (nut)	E6-361500	E6-421500	E6-481500	E6-541500	E6-601500	E6-721500	E6-841500	E6-961500
DBT	E6-360400	E6-420400	E6-480400	E6-540400	E6-600400	E6-720400	E6-840400	E6-960400
FMC 3000 (nut)	E6-361100	E6-421100	E6-481100	E6-541100	E6-601100	E6-721100	E6-841100	E6-961100
Hewitt-Robins (nut)	E6-361400	E6-421400	E6-481400	E6-541400	E6-601400	E6-721400	E6-841400	E6-961400
Precision	E6-360100	E6-420100	E6-480100	E6-540100	E6-600100	E6-720100	E6-840100	E6-960100
Rexnord (nut)	E6-361300	E6-421300	E6-481300	E6-541300	E6-601300	E6-721300	E6-841300	E6-961300
Stephens-Adamson	E6-360300	E6-420300	E6-480300	E6-540300	E6-600300	E6-720300	E6-840300	E6-960300

Roll Diameter = 7"	36	42	48	48	60	72	84	96
Continental (nut)	E7-361500	E7-421500	E7-481500	E7-541500	E7-601500	E7-721500	E7-841500	E7-961500
DBT	E7-360400	E7-420400	E7-480400	E7-540400	E7-600400	E7-720400	E7-840400	E7-960400
FMC 3000 (nut)	E7-361100	E7-421100	E7-481100	E7-541100	E7-601100	E7-721100	E7-841100	E7-961100
Hewitt-Robins (nut)	E7-361400	E7-421400	E7-481400	E7-541400	E7-601400	E7-721400	E7-841400	E7-961400
Precision	E7-360100	E7-420100	E7-480100	E7-540100	E7-600100	E7-720100	E7-840100	E7-960100
Rexnord (nut)	E7-361300	E7-421300	E7-481300	E7-541300	E7-601300	E7-721300	E7-841300	E7-961300
Stephens-Adamson	E7-360300	E7-420300	E7-480300	E7-540300	E7-600300	E7-720300	E7-840300	E7-960300

Returns

Roll Diameter = 6"	36	42	48	54	60	72	84	96
Continental (nut)	E6-361501	E6-421501	E6-481501	E6-541501	E6-601501	E6-721501	E6-841501	E6-961501
DBT	E6-360401	E6-420401	E6-480401	E6-540401	E6-600401	E6-720401	E6-840401	E6-960401
FMC 3000 (nut)	E6-361101	E6-421101	E6-481101	E6-541101	E6-601101	E6-721101	E6-841101	E6-961101
Hewitt-Robins (nut)	E6-361401	E6-421401	E6-481401	E6-541401	E6-601401	E6-721401	E6-841401	E6-961401
Precision	E6-360101	E6-420101	E6-480101	E6-540101	E6-600101	E6-720101	E6-840101	E6-960101
Rexnord (nut)	E6-361301	E6-421301	E6-481301	E6-541301	E6-601301	E6-721301	E6-841301	E6-961301
Stephens-Adamson	E6-360301	E6-420301	E6-480301	E6-540301	E6-600301	E6-720301	E6-840301	E6-960301

Roll Diameter = 7"	36	42	48	54	60	72	84	96
Continental (nut)	E7-361501	E7-421501	E7-481501	E7-541501	E7-601501	E7-721501	E7-841501	E7-961501
DBT	E7-360401	E7-420401	E7-480401	E7-540401	E7-600401	E7-720401	E7-840401	E7-960401
FMC 3000 (nut)	E7-361101	E7-421101	E7-481101	E7-541101	E7-601101	E7-721101	E7-841101	E7-961101
Hewitt-Robins (nut)	E7-361401	E7-421401	E7-481401	E7-541401	E7-601401	E7-721401	E7-841401	E7-961401
Precision	E7-360101	E7-420101	E7-480101	E7-540101	E7-600101	E7-720101	E7-840101	E7-960101
Rexnord (nut)	E7-361301	E7-421301	E7-481301	E7-541301	E7-601301	E7-721301	E7-841301	E7-961301
Stephens-Adamson	E7-360301	E7-420301	E7-480301	E7-540301	E7-600301	E7-720301	E7-840301	E7-960301

Dimension Requirements

Company: _____

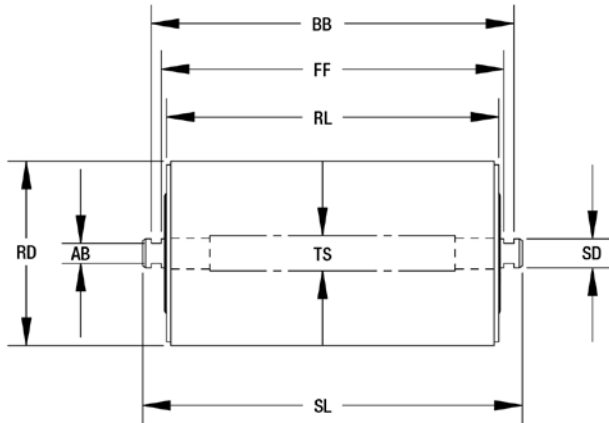
Contact: _____ Email: _____

Phone: _____ Fax: _____

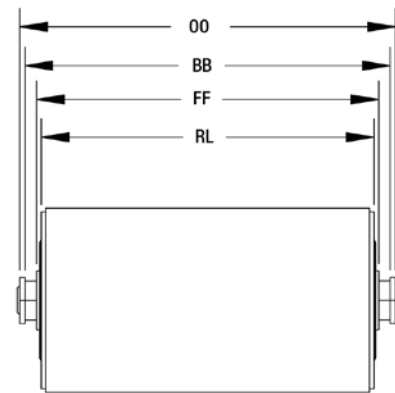
	Example	Roll 1	Roll 2	Roll 3	Roll 4
Shaft Type (slot/nut)	Slot				
Roll Diameter (RD)	5				
Roll Length (RL)	11.0625				
Frame Fit (FF)	11.30				
Slot-to-Slot (BB)	11.85				
Across Slot (AB)	.545				
Shaft Diameter (SD)	20mm				
Shaft Length (SL)	12.3125				
Through Shaft Diameter (TS)	20mm				
Hex Nut Outside-to-Outside (OO)	-				

Slot or Hex Nut Dimensions	Example	Roll 1	Roll 2	Roll 3	Roll 4
A	20mm				
B	.545				
C	.231				
D	.275				
E	-				

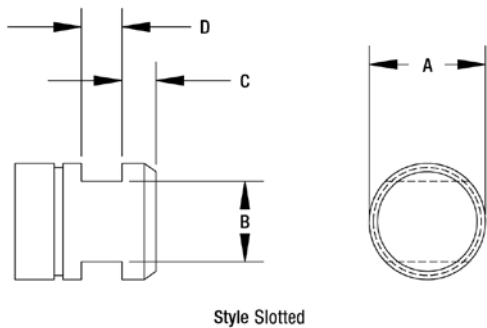
Retro Fit Roll Dimensions



Roller

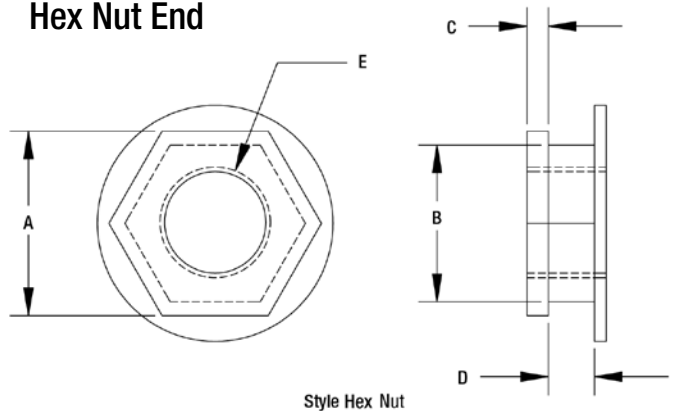


Slotted Shaft End



Style Slotted

Hex Nut End



Style Hex Nut

www.superior-ind.com

1-800-437-9074 / 320-589-3876

PO Box 654 / 319 East State Highway 28

Morris, MN 56267



SUPERIOR
INDUSTRIES